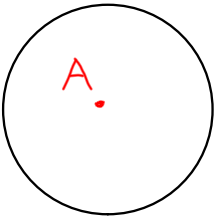


11.1 Parts of a Circle

Naming a circle

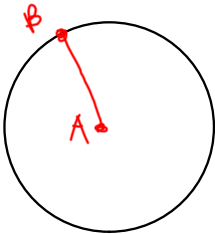
Circle A



Circle-the set of all points, in a plane, that are a given distance from a given point.

center

Radius-the segment that joins the center of the circle and a point on the circle.

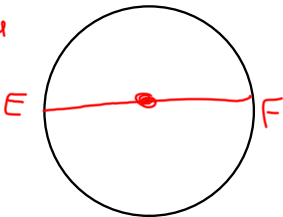


Chord-a segment whose endpoints are on the circle.

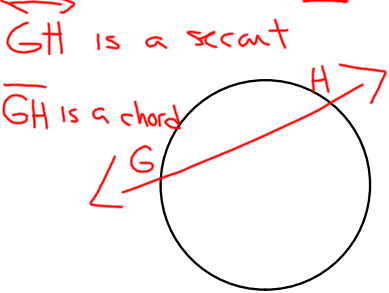


Diameter-The longest chord; passes through the center.

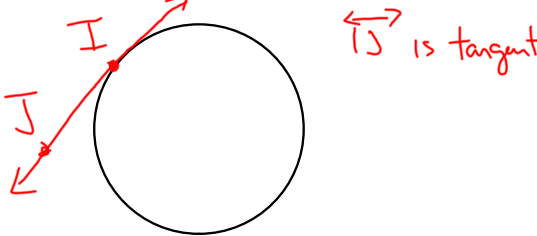
EF is the diameter



Secant-a line that intersects a circle in two points. (contains a chord)

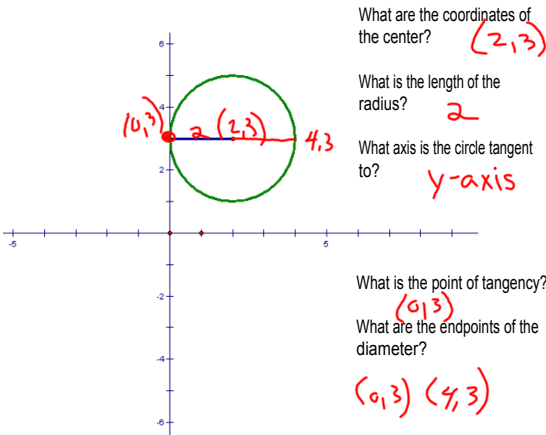
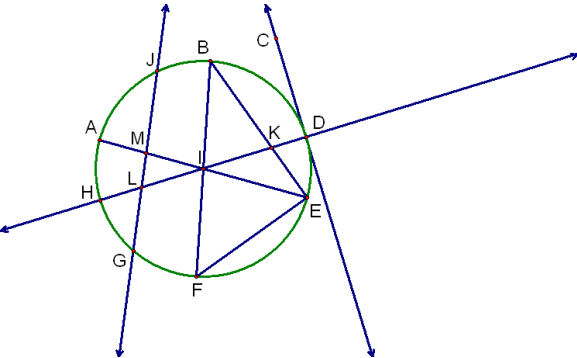



Tangent-a line, in the plane of the circle, that intersects the circle in exactly one point.



Point of tangency-point where the tangent intersects the circle.

point I



 HW
p591-592
1-14, 19-35, 40, 41